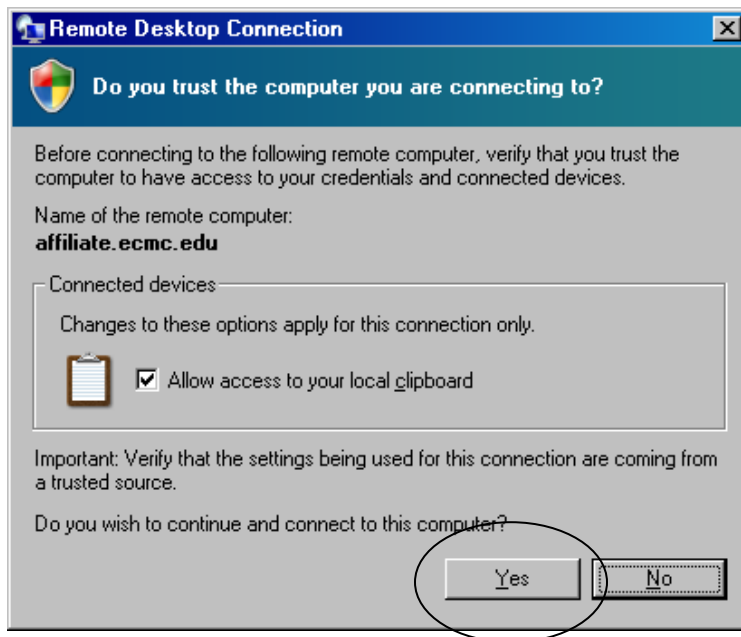
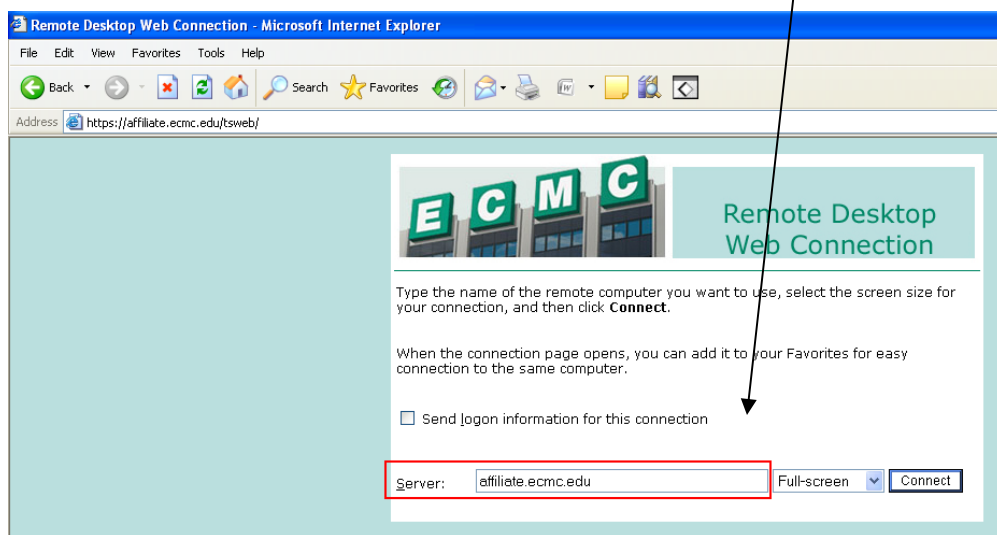


From a browser go to : <https://affiliate.ecmc.edu/tsweb/>

(you may be prompted to install an ActiveX component. Say ok and then you should be able to enter the server name)

At the Remote Desktop Web Connection screen, enter the server name: **affiliate.ecmc.edu**



If meditech seems sluggish you need the most recent RDP Client for Windows

For the most recent RDP Client, click the following link:

<http://www.microsoft.com/downloads/details.aspx?FamilyID=6e1ec93d-bdbd-4983-92f7-479e088570ad&DisplayLang=en>

Hit the download button on the page and go through a typical installation

This will log you into the server any problems or questions please contact ext 4477

If you need additional applications added to your desktop, call us at ext 4477.